

# CERTIFIED LAND CORNER RECORDATION

DESCRIPTION OF CORNER EVIDENCE FOUND, AND ORIGINAL RECORD (If known)

T.15 N.

33	34
4	3

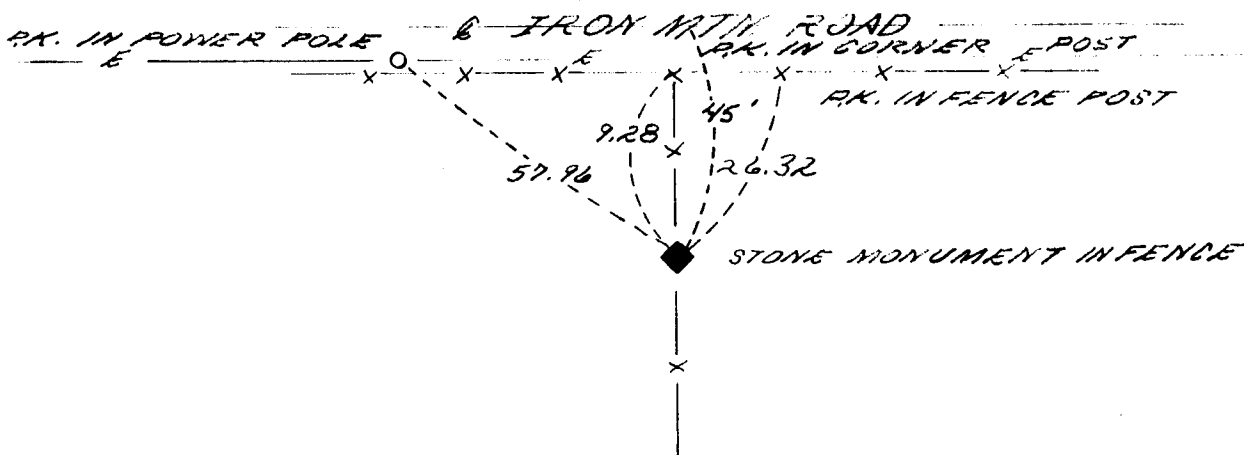
FOUND: A GRANITE STONE FIRMLY SET PROJ. 8"x8"x6"  
ABOVE GROUND PLAINLY MARKED W/ 3 NOTCHES ON  
E. & W. EDGES

14 N. R. 66 W.

DESCRIPTION OF MONUMENT AND ACCESSORIES ESTABLISHED  
TO PERPETUATE THE ORIGINAL LOCATION OF THIS CORNER:

SEE TIES BELOW

SKETCH, WITH COURSE AND DISTANCE TO ADJACENT CORNER IF DETERMINED IN THIS SURVEY.  
(May Sketch or Paste Reproduction on Reverse Side.)



I, JOHN A. STEIN certify that I have carefully performed or reviewed the work  
done on the diagrammed corner as reported on this recordation form and approve the same.

Signature of Surveyor

L.S. 2500  
Registration No.

STATE OF WYOMING,

Office of Clerk and Recorder,

County of Taramie

740811

This "corner record" was filed for record on the APR 12 1984 day of 19, was noted  
on the cross-index plat and is assigned page No.       , in book No.       .

County Official

Cross Index No. <u>2-13</u>	T. <u>15 N.</u>	R. <u>66 W.</u>	Mer. <u>6 1/4</u>
<u>1 A-13</u>	T. <u>14 N.</u>	R. <u>66 W.</u>	Mer. <u>6 1/4</u>
_____	T. _____	R. _____	Mer. _____
_____	T. _____	R. _____	Mer. _____
_____	T. _____	R. _____	Mer. _____
_____	T. _____	R. _____	Mer. _____
_____	T. _____	R. _____	Mer. _____

A13 14-66